

# *Apartment Rates*

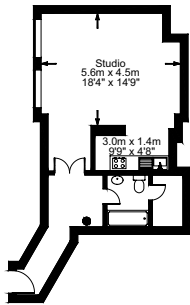
Serviced Apartments in the Heart of London



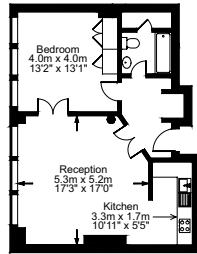
**196**  
*Bishopsgate*



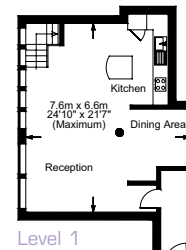
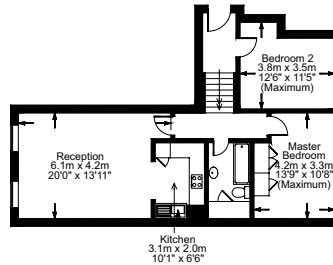
## Executive Studio Apartment



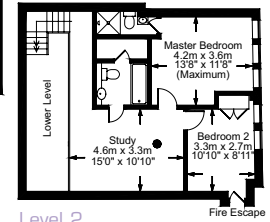
## Executive One Bedroom Apartment



## Executive Two Bedroom Apartment



## Penthouse Apartment



ALL PLANS FOR ILLUSTRATIVE PURPOSES ONLY - NOT TO SCALE.  
The position & size of the doors, windows, appliances and other features are approximate only.

Type of Apartment	Sqm	1-6 nights	7-28 nights	29 + nights
Studio	35-40	£193	£164	£135
Executive Studio	45-50	£204	£173	£143
One Bedroom Apartment	40-55	£230	£196	£161
Executive One Bedroom	60-65	£240	£204	£168
Two Bedroom Apartment	70-75	£304	£258	£213
Penthouse Apartment	100-105	£385	£327	£270

All of the above rates are subject to VAT at 17.5% for the first 28 nights and at 3.5% thereafter. Rates are valid from 1st Jan - 31st Dec 2010. Rate discounts are based on consecutive stays. Full terms of business are available on request.



196 Bishopsgate, London, EC2M 4NR Tel: +44 (0) 20 7621 8788 Fax: +44 (0) 20 7621 0311  
E-mail: [reservations@196bishopsgate.com](mailto:reservations@196bishopsgate.com) [www.196bishopsgate.com](http://www.196bishopsgate.com) [www.196bookings.com](http://www.196bookings.com)